

*The Mainstay*



# The Mainsail



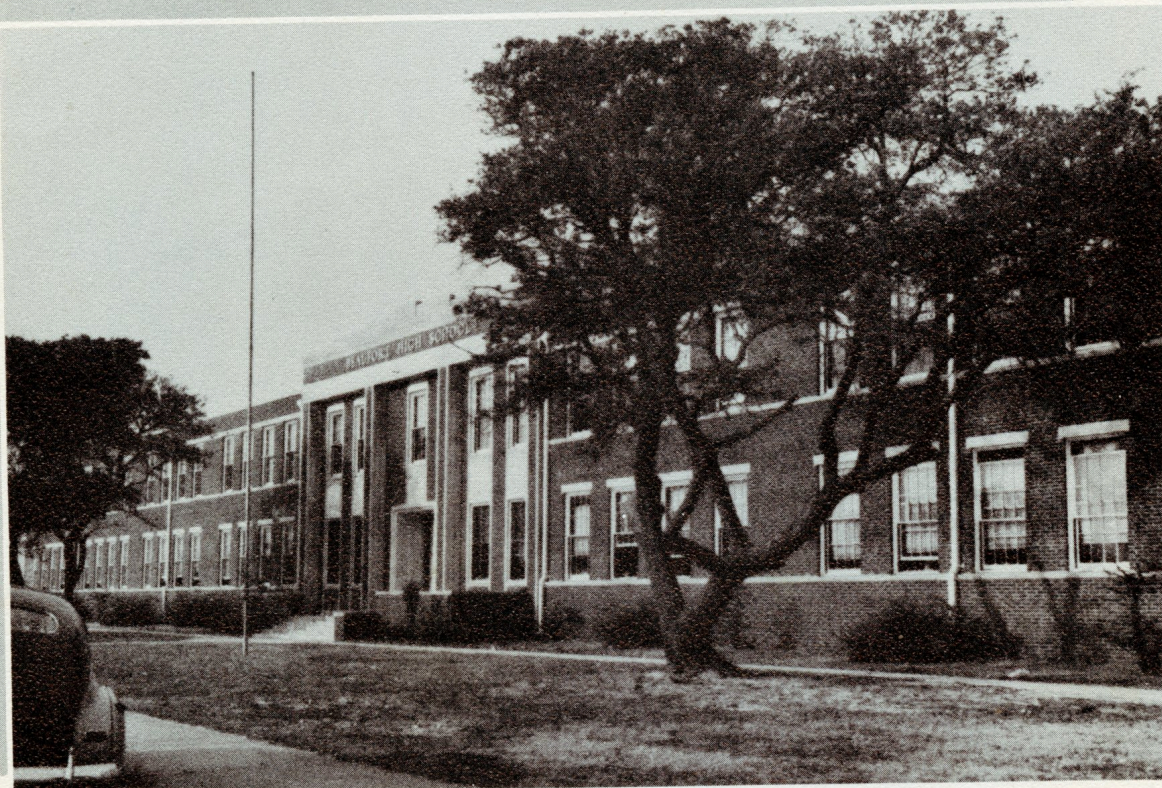
Don Willis

Presented by the Senior Class of

BEAUFORT HIGH SCHOOL

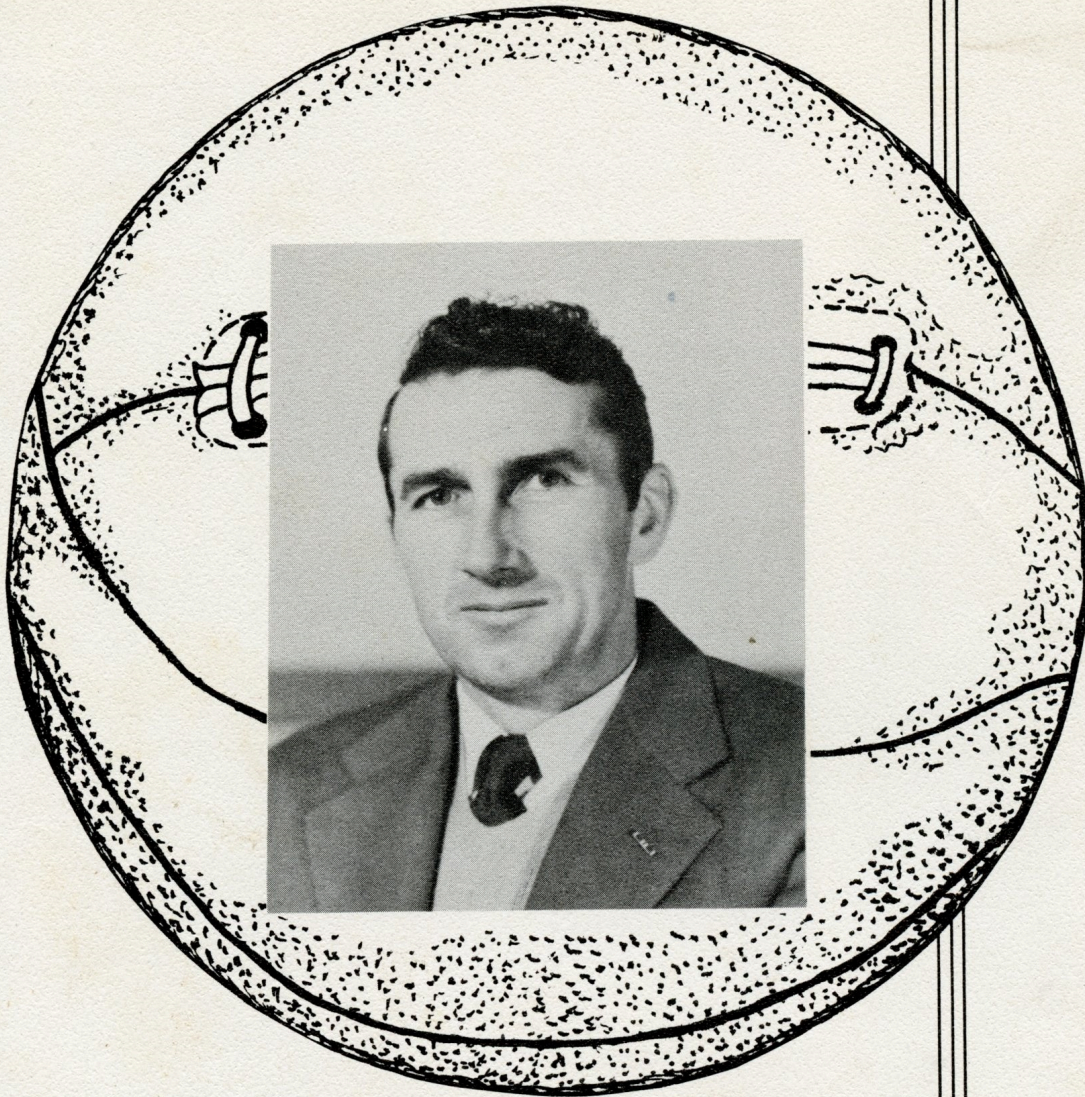
Beaufort, North Carolina

1950



## *Foreword*

An institution of learning is "a ship that sails the sea of knowledge." Such a ship must be sound and firm; and as faultless in its very depths as it is in its uppermost riggings. It must have background, unity, beauty, and above all the cherished little idiosyncrasies that make its crew want to stand up and say, "This is my ship." With this self same attitude we, the staff of 49-50, present to you this yearbook of Beaufort High School.



## *Dedication*

TO  
THOMAS H. McQUAID

Through the years you have been our guiding light, our friend and our leader. Your sympathy and understanding, which have been manifest from time to time, will ever remain with us. Our future years will show your unerring influence. We shall never forget you, "Coach." In parting we say, "Farewell and God Bless You."

# Principal's Message



.....

When I first met you in September, 1939 you were a cute, little tow-head group in the second grade. Can you reminisce for a few minutes and believe that you were ever that small? Now you are dignified Seniors and much prettier and handsomer than you were eleven years ago. You have been full of life and enjoyed it to the fullest extent. By being exuberant you have helped me to feel young. You are a group that I have admired for your loyalty, honesty, and fair play. With these virtues as guiding stars in your future, I predict for each of you happiness and success.

.....



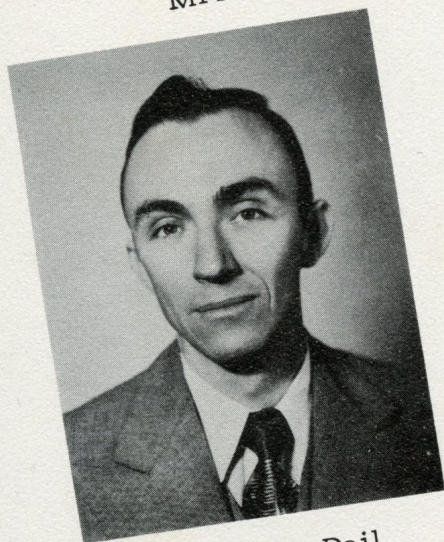
Mrs. Anne Salter



Miss Lena Duncan



Miss Gladys Chadwick



Mr. Alton Dail

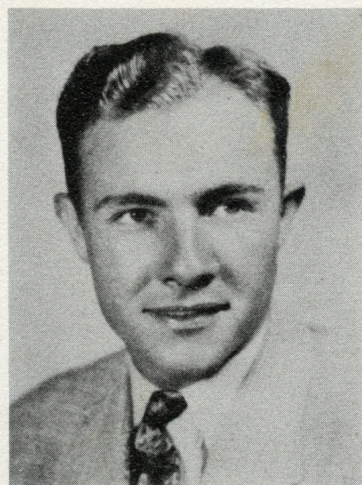
## *Faculty*



Mr. Thomas McQuaid



Mrs. Geraldine Beveridge



Mr. Frank Hawkins

Miss Madolyn Goodwin  
(not pictured)



Mrs. Grace Fodrie



## Class Poem

The mysterious depths of ocean, and the wonders that you see,  
Are but nature's marvels, the denizens of the sea.  
The blue-green of the waters, has a fascinating look,  
It draws one like a magnet, to some strange and darkened nook,

Alas, fierce, rolling ocean, your charm can long endure,  
But the white and lifeless sailors, no longer can you lure,  
The corals of the briney deep, one reaches and cannot get,  
The strife is long, the way is hard, and life a strangling net.

For-sooth that I should ever say, give up for all is lost,  
I only meant (and truly said) that your goal will dearly cost.  
Fame or glory is not easily won, nor yet silver or precious gems,  
The efforts of man must be strong and not fantastic whims,

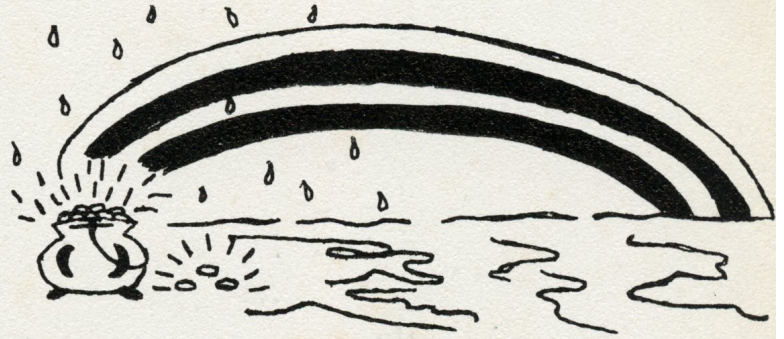
Never fear the on-rushing tide, nor yet know the coward's wail.  
Hold your own with any man, and then you cannot fail.  
The storm of life is bitter, and many are those that fall,  
But any man can weather the storm if on his maker he does call.

Strange and yet simple life appears to be,  
For in all his terror and hardships, even man is free.

---

## Ship's Log

---



Early one bright September morning in the year 1946, Piver's Island was overrun by 88 very green freshman students. The freshmen wandered sorefooted and dumbfounded around the island for about four months. Sometimes they were solicitously told that they would get a new school building or that the weather would finally clear; though more often they were ridiculed and snubbed by upperclassmen. But, as there is a certain solace in being the underdog, they rather reluctantly left the freedom of the beautiful island to go to the strict routine of a school building.

After enjoying a summer's vacation these still hopeful students came back forcefully as sophomores to tackle this high school "business." Soon they began to filter into the many extra-curricular activities of the school. Here their minds and personalities awakened and began to flourish. It was revealed that they were particularly talented in music, in athletics, in loud talking, and in the art of persecuting innocent freshmen. However these ambitious sophs also sought advancement by trying to overcome the social barriers set up by snobbish Juniors and Seniors. With the aid of a still young student council they were practiced in the art of self-government.

The Junior year caught its class napping over the ordeal of the Junior-Senior banquet. They were soon awakened, however, to find it quite a job. But every cloud has its silver lining and after the gym had its "face lifted" it really did resemble heaven. The banquet was such a success it even surprised the Juniors. By now many classmen had won athletic awards, musical recognitions, and key positions in clubs. All in all, they were really preparing for the big year.

And how it came. Truly this was the year of glory. Seniors won control of the student body. They now were the sedate untouchables. They often feigned forgetfulness of underclassmen's names, they became immediately indignant at the slightest encroachment upon their rights, and they lived in a little world of their own. They laughed at their own jokes and own frailties.

Now their high school voyage is over. There is no turning back to recapture the carefree life of youth. Some will loiter reluctantly at the door of life, while others will fail. But in the heart of each there is a secret hope that he can accomplish something to bring honor and glory to his beloved Alma Mater.

# Seniors



CLASS OFFICERS

Charles Owens . . .	Treasurer
Betty Lou Pittman . . .	Secretary
Jimmy Fodrie. . .	Vice-President
Neva Dail . . . . .	President

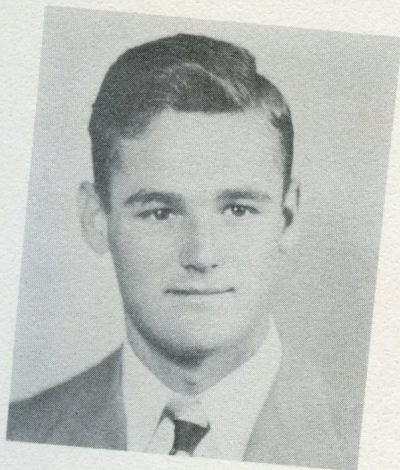
CLASS MASCOT: Bill Willis



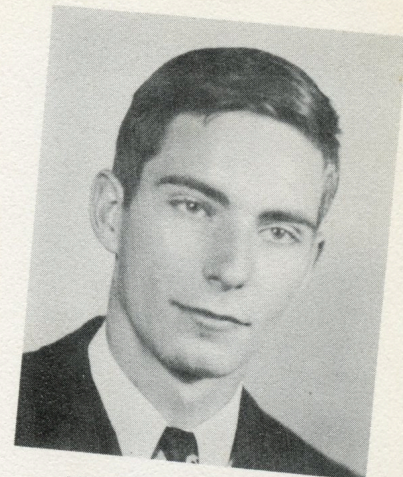
MOTTO: The beckoning hand of fortune calls; and we cast off on the rising tides.

CLASS COLORS: Blue and white

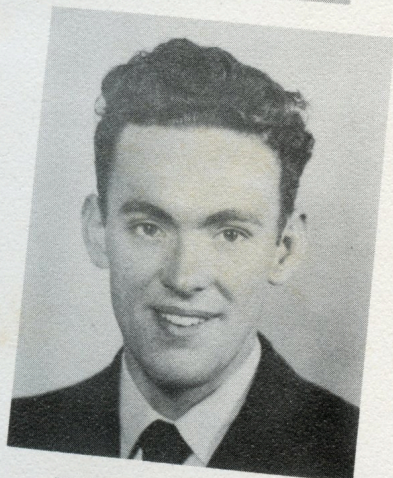
CLASS FLOWER: Larkspur



JULIAN EDWARD AUSTIN  
"CHOO-CHOO"  
BASKETBALL-2,3,4; BASEBALL-2,3,4;  
FOOTBALL-4; BOYS' STATE-3; STUDENT  
COUNCIL-3,4; PRESIDENT-4; BETA CLUB-  
3,4; BAND-3,4; VARSITY CLUB-4; JUN-  
IOR CLASS VICE-PRESIDENT; SENIOR PLAY.



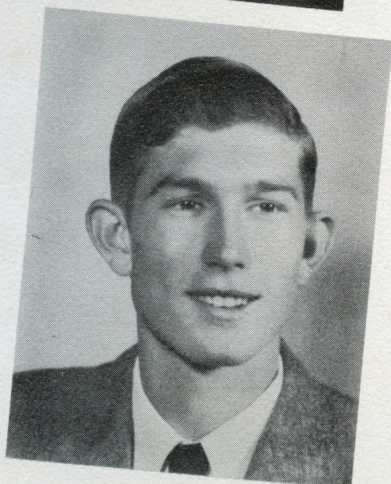
CEDRIC DUANE BEACHEM  
"SHARKY"  
4-H-1,2,3; BETA CLUB-3,4; SOPHOMORE  
CLASS PRESIDENT; STUDENT COUNCIL-2;  
BASKETBALL-4; ANNUAL STAFF-4.



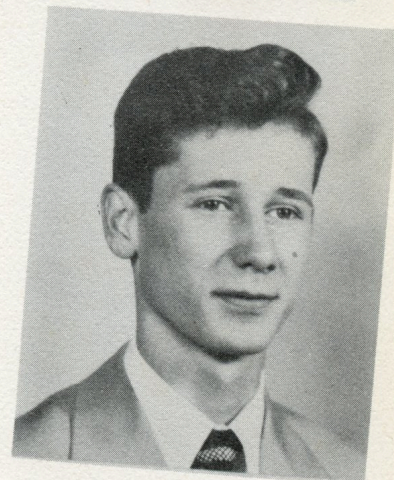
BERTIE MONROE BROOKS  
"BERT"  
GLEE CLUB-1,2; BAND-3; STUDENT COUN-  
CIL-4; FOOTBALL-4.



MERITA CAROL CHADWICK  
(ENTERED B. H. S. IN 1948) TRI-HI-Y  
3,4.



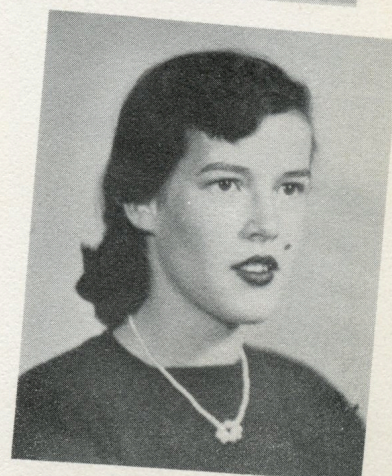
EDGAR EARL COLE  
FOOTBALL-4.



WILLIAM OLIVER CRAWFORD  
"BILLY"  
GLEE CLUB-1,2; BASKETBALL-2,3; ASSIS-  
TANT MANAGER-4.



NEVA WILLIS DAIL  
GLEE CLUB-1,2; STUDENT COUNCIL-1;  
TRI-HI-Y-2,3,4; PROGRAM CHAIRMAN-3,  
SECRETARY-4; BETA CLUB-3,4, TREASURER-  
4; SENIOR CLASS PRESIDENT; MARSHALL-  
1,2,3, CHIEF MARSHALL-3; SCHOLARSHIP  
MEDAL-2; ANNUAL STAFF-4; SENIOR PLAY.



IRIS WINIFRED DAVIS  
FRESHMAN CLASS PRESIDENT; F.H.A.-1,2,  
PRESIDENT-2; TRI-HI-Y-2,3,4, PRESI-  
DENT-4; MAJORETTE-3,4, ALTERNATE-1,2;  
GLEE CLUB-2,3; BETA CLUB-3,4; BASKET-  
BALL-1,2,3,4; STUDENT COUNCIL-2,4;  
VARSITY CLUB-4.



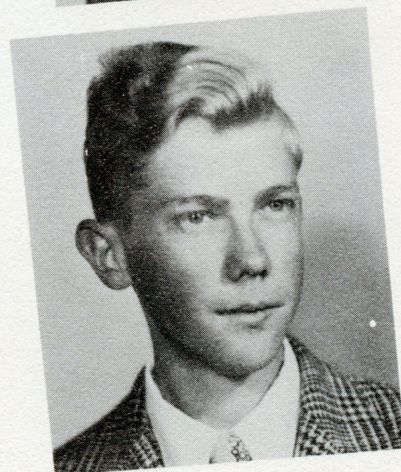
MARY ELIZABETH DAVIS  
GLEE CLUB-1,2; TRI-HI-Y-2,3,4, TREAS-  
URER-3; STUDENT COUNCIL-4.



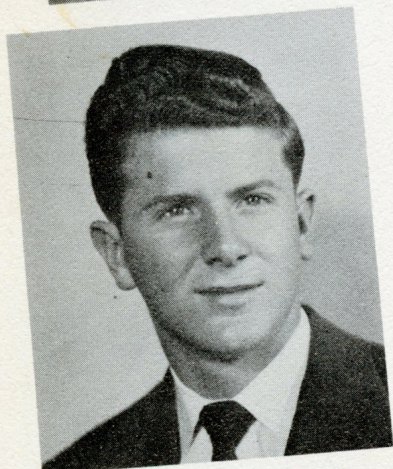
CONSTANCE VANCE DUDLEY  
"CONNIE"  
BAND-1,2,3,4; BETA CLUB-3,4; STUDENT  
COUNCIL-2; JUNIOR CLASS TREASURER.



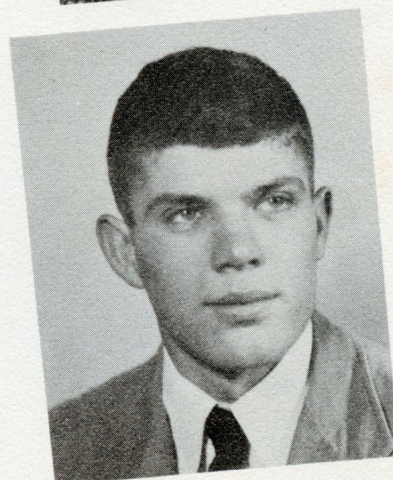
NITA LOIS DUDLEY  
F.H.A.-1,2,3,4, TREASURER-4.



MELVIN GRAY EUBANKS  
4-H-1,2,3,4; ANNUAL STAFF-4.



HOWARD COLE FODRIE  
"PAT"  
BASKETBALL-1,2,3,4, ALL COUNTY GUARD-  
4; BASEBALL-2,4; BETA CLUB-3,4, PRESI-  
DENT-4; STUDENT COUNCIL-1,3,4, VICE-  
PRESIDENT-3; GLEE CLUB-2,3; CLASS  
PRESIDENT-1,3; AMERICAN LEGION AWARD-  
1; 4-H-1, SECRETARY-1; BAND-1; FOOT-  
BALL-4, CAPTAIN-4; VARSITY CLUB-4;  
ANNUAL STAFF-4; SENIOR PLAY.



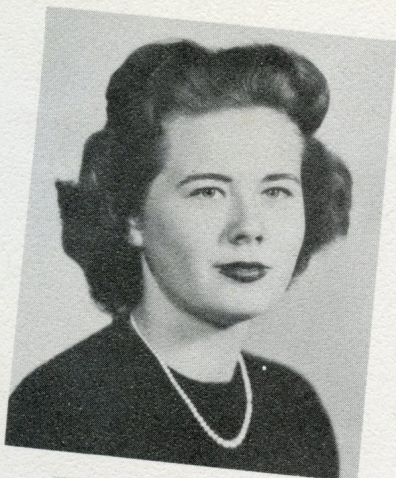
JAMES EDWARD FODRIE, JR.  
"JIMMY"  
BASKETBALL-2,3,4, ALL COUNTY FORWARD-  
4, A.C.C. ALL TOURNAMENT GUARD-3;  
BASEBALL-2,3,4; GLEE CLUB-1,2; STU-  
DENT COUNCIL-2; BOYS' STATE-3; FOOT-  
BALL-4; SENIOR CLASS VICE-PRESIDENT;  
VARSITY CLUB-4; 4-H-1; BUSINESS MANA-  
GER OF NEWSPAPER-4.



MARGARET FODRIE WYMAN  
F.H.A.-1,2; BETA CLUB-3 4.

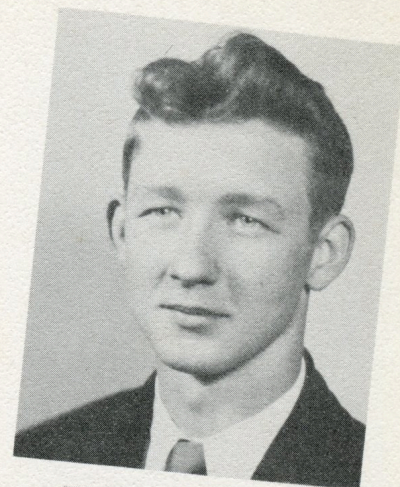


PEGGY JOYCE GUTHRIE  
MAJORETTE-1,2,3,4; GLEE CLUB-2,3;  
TRI-HI-Y-3,4; STUDENT COUNCIL-2,4;  
BETA CLUB-3,4, SECRETARY-4; BASKET-  
BALL-1,2,3,4; VARSITY CLUB-4.



MARGARET MAE HAMILTON  
"PEGGY"

BAND-1; GLEE CLUB-2,3; STUDENT COUNCIL-3; F.H.A.-1,2; BASKETBALL MANAGER-1,4; VARSITY CLUB-4; REPORTER-4.



JOHNNY WASHINGTON HAYNES, JR.  
GLEE CLUB 1,2,3; 4-H-1; BUS DRIVER-3,4; SOPHOMORE CLASS TREASURER; GLEE CLUB AWARD-3; BUSINESS MANAGER OF ANNUAL-4; SENIOR PLAY.



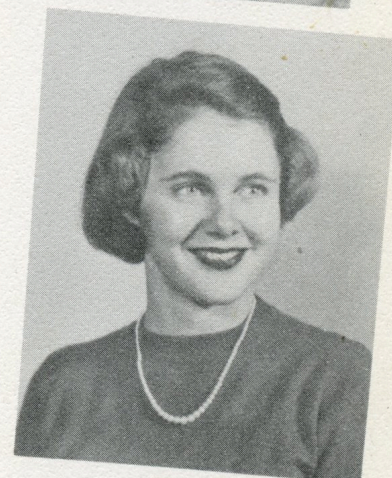
ALICE MARIE HILL  
F.H.A.-1,2; BASKETBALL-1; STUDENT COUNCIL-3; 4-H CLUB-3, PRESIDENT-3.



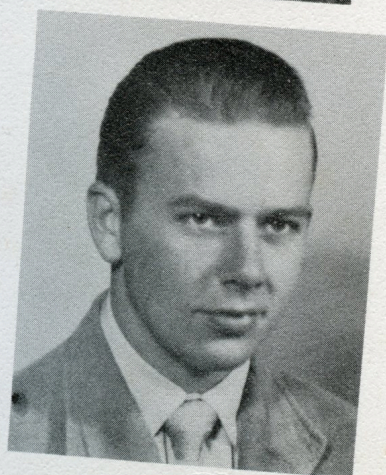
JEAN GRAHAM HOPKINS  
"JEANIE"  
(ENTERED B. H. S. IN 1948) TRI-HI-Y-4; BETA CLUB-4; BAND 3,4; GLEE CLUB-3; JUNIOR CLASS SECRETARY; STUDENT COUNCIL-3; ANNUAL STAFF-4; MARSHALL-3.



LETITIA ANN HOUSE  
"TISH"  
BETA CLUB-3,4; F.H.A.-1; TRI-HI-Y-3,4; GLEE CLUB-1,2,3; SENIOR PLAY.



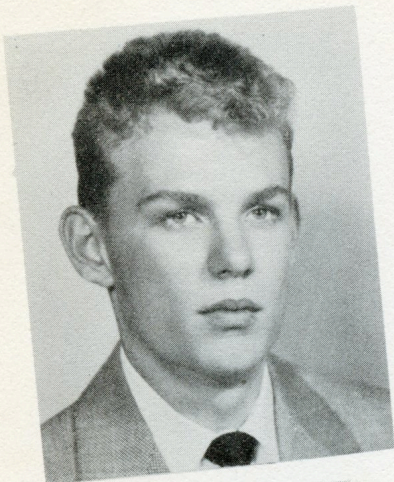
MAY JOSEPHINE IPOCK  
"Jo"  
TRI-HI-Y-3,4, REPORTER-3,4; GLEE CLUB-1,2,3; PAPER STAFF-4.



OTTIS REYNOLDS JEFFERSON, JR.  
BAND-1,2,3,4, BAND AWARD-2; GLEE CLUB-1-2; BASEBALL-1,2,3,4; BASKETBALL-2,3,4; VARSITY CLUB-4.



MARY ELIZABETH JOHNSON  
BETA CLUB-3,4; F.H.A.-1,2,3; GLEE CLUB-1,2,3.



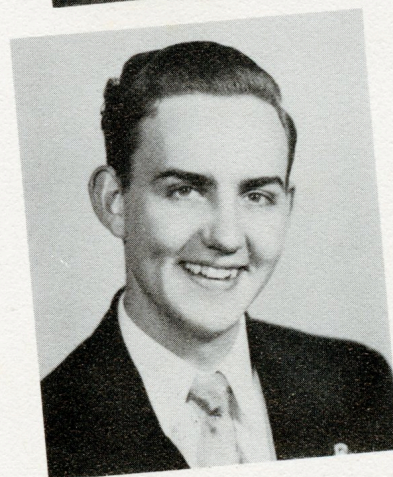
WILLIAM WARD KING  
"PETE"  
4-H CLUB-1,2,3,4; SENIOR PLAY.

OLA CORRINNE LAUGHINGHOUSE  
BAND-1,2,3,4; GLEE CLUB-1,2; F.H.A.-  
1,2,3; BETA CLUB-3,4.



AUDREY LOUISE LAWRENCE  
GLEE CLUB-1,2; F.H.A.-1,2.

ALEX DELMAS LEWIS  
BAND-1,2,3; F.H.A.-4; BASKETBALL MANA-  
GER-4; FOOTBALL MANAGER-4; ANNUAL  
STAFF-4.



MARY SUE LYNCH  
"SKINNY"  
BAND-1,2,3; F.H.A.-1,2; GLEE CLUB-2;  
TRI-HI-Y-4; BASKETBALL-2,3,4; ALL  
COUNTY BASKETBALL TEAM-4.

PATSY RUTH MILLER  
F.H.A.-1,2; GLEE CLUB-1,2,3; BETA  
CLUB-3,4; BAND-2.



JUANITA MOORE  
"NITA"  
F.H.A.-1,2; MAJORETTE-1,2,3,4; GLEE  
CLUB-2,3; CHEERLEADER-2; SOPHOMORE  
CLASS VICE-PRESIDENT; TRI-HI-Y-3,4,  
TREASURER-4.

PATRICIA JEAN MORTON  
"PAT"  
STUDENT COUNCIL-1; F.H.A.-1,2; GLEE  
CLUB-1,2.

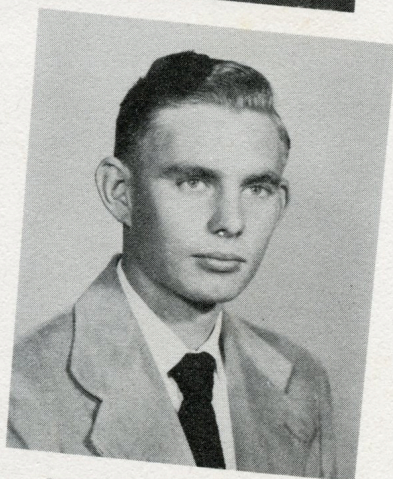




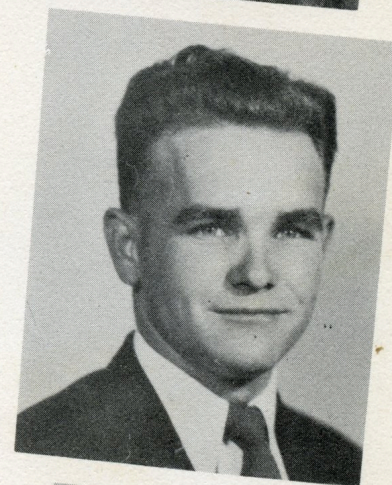
BETSY MAE NOE  
"BET"  
F.H.A.-1,2; GLEE CLUB-1,2; TRI-HI-Y-2,3,4; BETA CLUB-3,4, PROGRAM CHAIRMAN-4; ANNUAL STAFF-4.



PEGGY O'NEAL  
"PEG"  
GLEE CLUB-1,2,3; BASKETBALL-1,2,4; F.H.A.-1,2; VARSITY CLUB-4; SECRETARY AND TREASURER-4.



CHARLES OWENS, JR.  
BASKETBALL-2,3,4; FOOTBALL-4; BAND-3,4; SENIOR CLASS TREASURER.



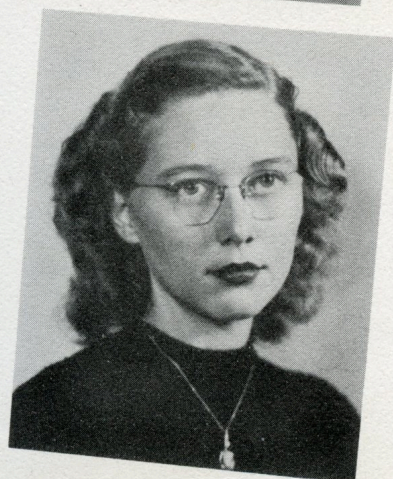
EDGAR LLOYD PAKE  
"EDDIE"  
(ENTERED B. H. S. IN 1947) 4-H CLUB-1,2,3.



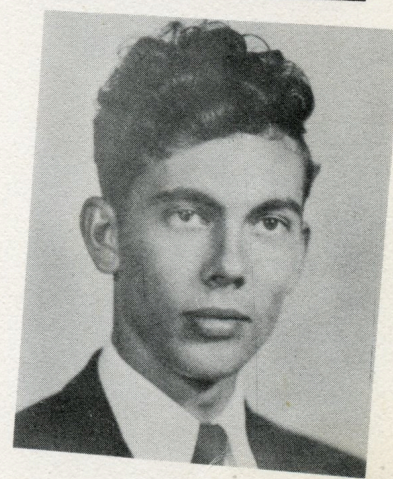
HELEN DAIL PAUL  
GLEE CLUB-1,2,3; DRUM MAJORETTE-1,2,3,4; TRI-HI-Y-2,3,4, PROGRAM CHAIRMAN-4; BETA CLUB-3,4; STUDENT COUNCIL-1,2, SECRETARY-2; CHEERLEADER-3; MARSHALL-1,2,3; NEWSPAPER EDITOR-4; ANNUAL STAFF-4; ACTIVITIES AWARD-3; SENIOR PLAY.



MARY FRAZIER PAUL  
BAND-1, GLEE CLUB-1,2,3; BETA CLUB-4; TRI-HI-Y-4; STUDENT COUNCIL-2; CHEERLEADER-3,4; ANNUAL STAFF-4; SENIOR PLAY.

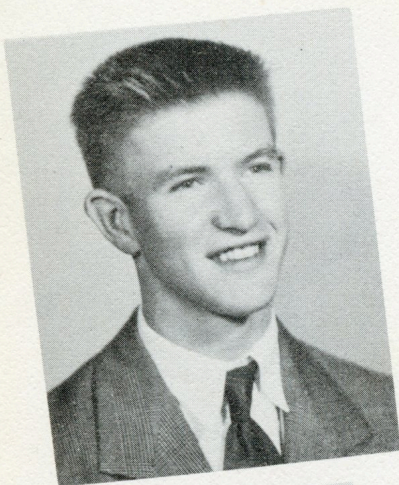


BETTY LOU PITTMAN  
4-H CLUB-1,2,3,4, SECRETARY-3; SENIOR CLASS SECRETARY.



WILLIAM HENRY RICKS, JR.  
"BILLY"  
BUS DRIVER-3,4; 4-H CLUB-1,2,3,4.

This Page Sponsored By  
SARA'S DRESS SHOP  
Beaufort, Morehead, N. C.



WILLIAM ROBERT SAMMONS  
"BILL"  
BASEBALL-1,3,4; BASKETBALL-2,3,4;  
FOOTBALL-4; GLEE CLUB-3; VARSITY  
CLUB-4.

IRENE ELIZABETH SIMPSON

*Good luck in your  
senior year. Love  
Irene*

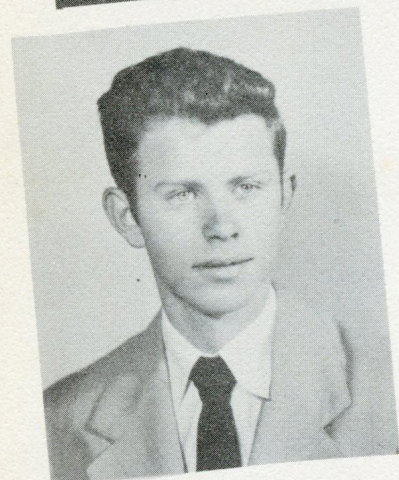
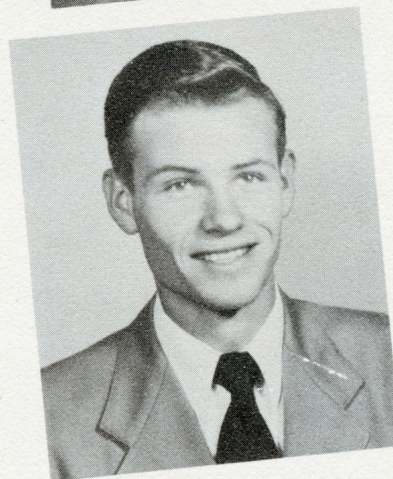


MARY LETITIA SIMPSON  
"TISHA"

GLEE CLUB-1,2; BASKETBALL-1,2,3,4;  
BETA CLUB-3,4; F.H.A.-1; SOPHOMORE  
CLASS SECRETARY; VARSITY CLUB-4; ALL  
TOURNAMENT BASKETBALL TEAMS, COUNTY  
& FARM LIFE-4.

GUY SMITH, JR.  
"FRANKIE"

GLEE CLUB-1,2,3; STUDENT COUNCIL-3,4;  
BASKETBALL-2,3,4; BASEBALL-3,4; FOOT-  
BALL-4; GLEE CLUB AWARD-2; VARSITY  
CLUB-4, PRESIDENT-4; SENIOR PLAY.

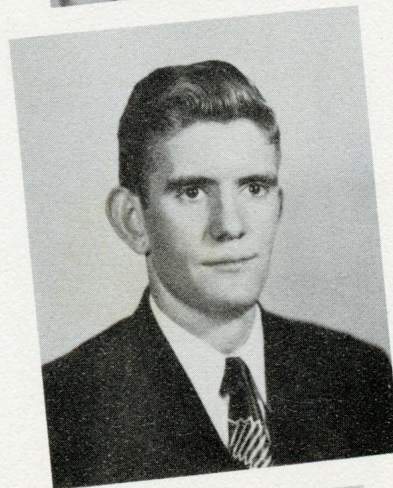


JOHN WILLIAM SMITH  
"JOHNNY"

GLEE CLUB-1,3; CHEERLEADER-3,4.

LESLIE DAVIS SPRINGLE  
"L. D."

4-H CLUB-1,2,3; BUS DRIVER-3,4.



MAMIE LOU SPRINGLE  
F.H.A.-1,2; BETA CLUB-3,4.

BETTY LOU STUART  
"SCOTTY"

GLEE CLUB-1,2,3; F.H.A.-1,2,3; BETA  
CLUB-3,4.



C. D. JONES CO.  
Everything to Eat  
Beaufort, N. C.



DAISY DEAN SULLIVAN  
F.H.A.-1,2; GLEE CLUB-1,2,3; BETA CLUB-3,4; SCHOOL REPORTER-3,4; ANNUAL EDITOR-4.



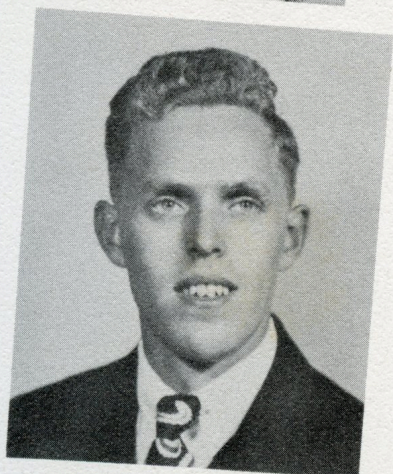
OLIVE VAUGHN TAYLOR  
FRESHMAN CLASS TREASURER; 4-H CLUB-1,2,3; PRESIDENT-2; BETA CLUB-3,4; TRI-HI-Y-3,4; F.H.A.-1,2; ANNUAL STAFF-4; CHEERLEADER-4; SENIOR PLAY.



ROBERT RIDER THOMPSON  
"BOB"  
(ENTERED B. H. S. IN 1949) FOOTBALL-4; BAND-4; CHEERLEADER-4.



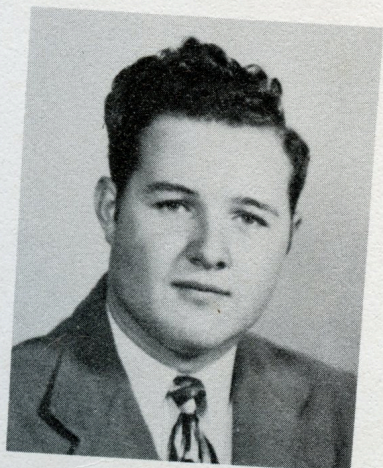
BETTY GENE TYLER  
"BEANIE"  
F.H.A.-1,2; GLEE CLUB-1,2,3; BETA CLUB-3,4; TRI-HI-Y-4; SENIOR PLAY.



GEORGE WASHINGTON WALLACE  
POSTGRADUATE.

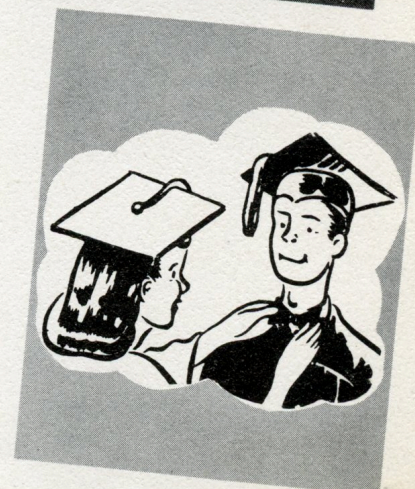


SUE GERTRUDE WARD  
F.H.A.-1,2; 4-H CLUB-1,2,3,4; BETA CLUB-4.



KENNETH HOWARD WILLIS  
"TURKEY"  
STUDENT COUNCIL-1,2,3; GLEE CLUB-1,2,3; FOOTBALL-4.

Compliments of  
CARTERET  
HARDWARE CO. INC.  
Phone 421-1  
Beaufort, N. C.



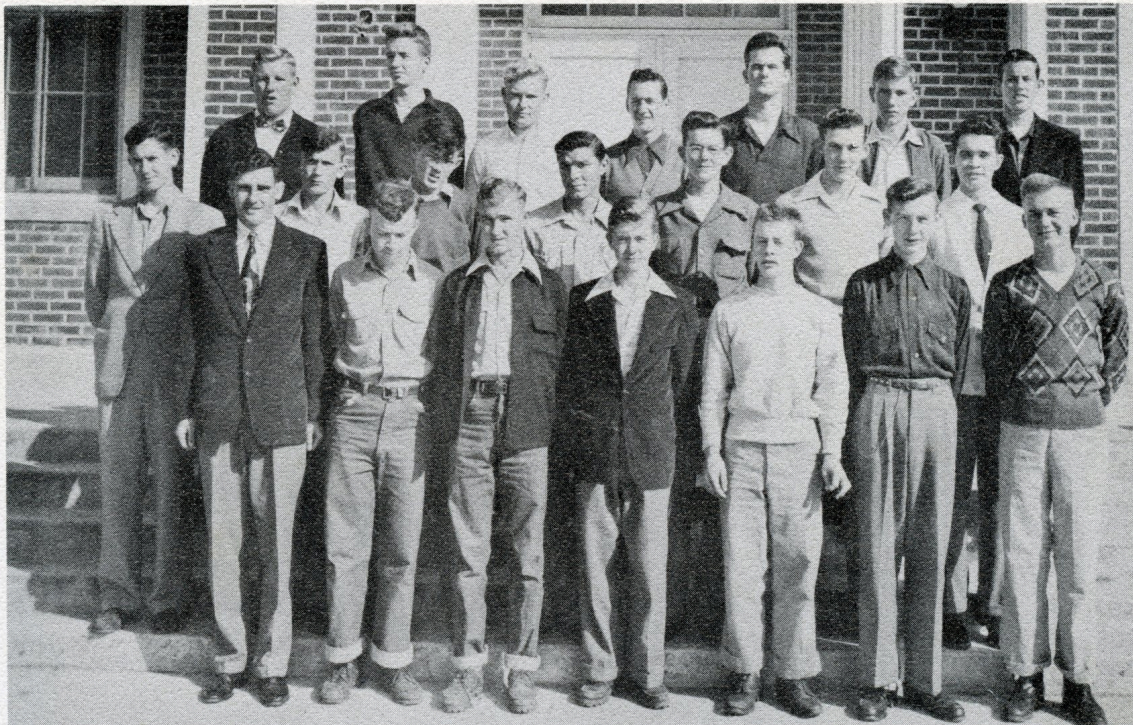
# Juniors



Billy Downum . . . . .	.President
Peggy Piver. . . . .	.Secretary
Patsy Mason . . . . .	.Vice-President
Bryan Loftin . . . . .	Treasurer

FIRST ROW: MAXINE HYLER, MARGARET ANNE LEWIS, CHRISTINE HANSEN, BERNICE GRIFFIN, JEAN TAYLOR, ANNA LOU LAUGHTON, ELIZABETH BELL. SECOND ROW: GENEVIEVE SIMPSON, FAYE BROOKS, JANE BASDEN, PATSY WARREN, ROZELLA SMITH, DOROTHY WALLACE, MARIE CANNON. THIRD ROW: MILDRED MASON, MR. DAIL, JOYCE GARNER, PATSY MASON, PEGGY PIVER, VIRGINIA SAUNDERS, LAVENIA MASON, JEAN BALL, VERA LOU LOFTIN. FOURTH ROW: JANICE WILLIS, ALICE DUDLEY, JANET DAVIS, CARROLL ANN WILLIS, BETSY FULFORD, SHIRLEY LIPMAN, CAROLYN GASKILL.





FIRST ROW: THOMAS WADE, THOMAS IVERSON, MORGAN WHITE, MARK EUBANKS, BILL SIMPSON, BONZELL LEWIS, ARTHUR STAFFORD. SECOND ROW: I. W. DAVIS, JR., JOE GOODWIN, RUDOLPH RHUE, MAXTON TOSTO, BRYAN LOFTIN, IVY MASON, BILLY DOWNUM. THIRD ROW: VINCENT WRIGHT, TOMMY DAVIS, LOUIS NOE, GORDON HARDESTY, JULIAN PIVER, CLYDE OWENS, STUART HILL. NOT SHOWN: EDGAR PAKE, BILLY RICKS, ALBERT SMALL.

### A JUNIOR SPEAKS

Well here we are--next to the top step in our journey through high school (with the front steps and balcony as our goal).

This has been an exciting year which will be topped this spring by the Junior-Senior Banquet. We really will have quite a task to present one which will excel the two previous ones but we are trying.

The Junior Class this year has members in all extra-curricular activities of the school such as band, Tri-Hi-Y, Beta Club, F.H.A., and basketball. Too, we have several members on the Student Council.

Thus far, we have been successful in our undertakings but the greatest test lies ahead--our senior year! Here's hoping we can make B.H.S. proud of us--the future seniors!

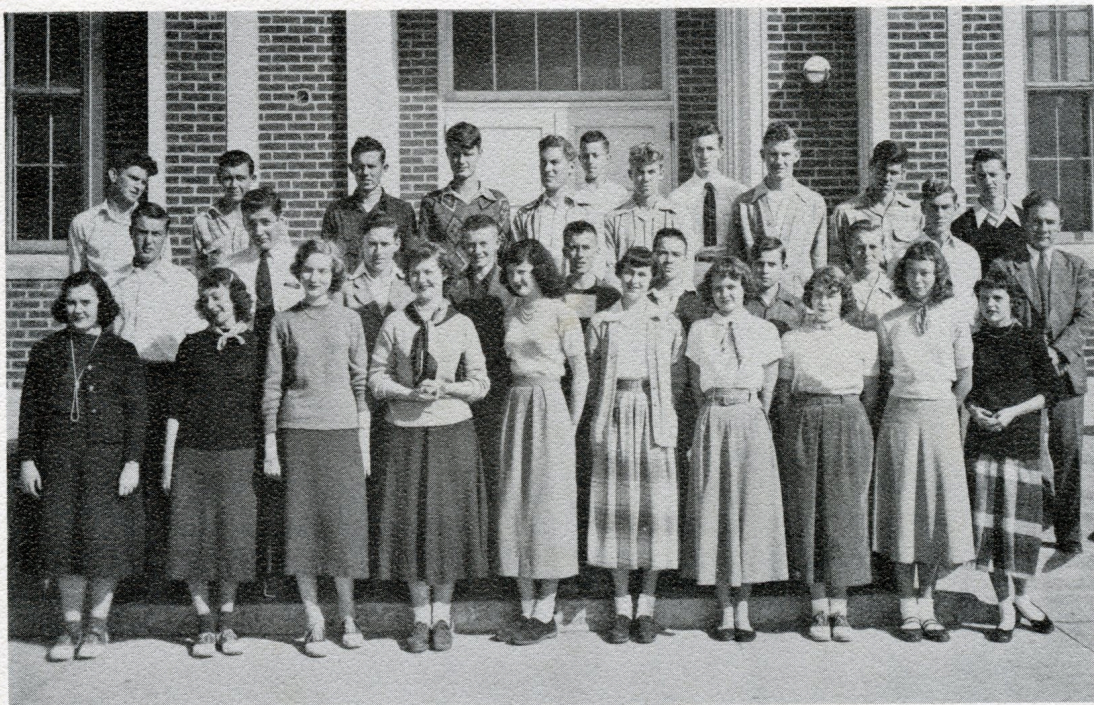
# Sophomores



Edith Willis . . . . .Secretary  
 Bertha Davis . . . . .Vice-President  
 Jimmy Parkin . . . . .Treasurer  
 Nancy Russell . . . . .President



FIRST ROW: BARBARA MASON, PATRICIA LEWIS, LELA FODRIE, EDITH LEWIS, SHIRLEY SPRINGLE, PATSY HARDESTY, SHIRLEY TAYLOR, JANET GILLIKIN, MARTHA PAKE. SECOND ROW: ELIZABETH HOUSE, ANN NORCUM, BOBBIE JEAN HERRING, DESSIE PITTMAN, BERTHA DAVIS, DOROTHEA GILLIKIN, LORNA SMITH, EDITH ANN WILLIS, JOYCE NORRIS. THIRD ROW: NANCY RUSSELL, FAYE TAYLOR, MARY LILLIE HAYNES, MARIE WEBB, ELLEN NORCUM, JANE MASON, CATHERINE NOE, KATHRYN WILLIS, CYNTHIA SKARREN.



FIRST ROW: SHELIA KAY SMITH, NELLIE CANNON, LORETTA TAYLOR, MARY OLIVE MARTIN, BETTY GARNER, JEAN DIXON, CONNIE LEWIS, LOIS BENTON, ANN HOPKINS, IRIS DUDLEY. SECOND ROW: MARION NOE, JIM SMITH, DELBERT RHUE, PIERSON WILLIS, JIMMY PARKIN, EDWARD POWELL, BLYTHE NOE, CARL LEWIS, WALLACE GARNER, MR. HAWKINS. THIRD ROW: GENE LEWIS, BOBBY W. WILLIS, BRAXTON BLAKE, GRAYDON GLOVER, BOBBY SAFRIT, BOBBY WILLIS, DONNIE DUDLEY, JOHN LYNCH, GARY COPELAND, GEORGE RUSSELL, HARRY TAYLOR. NOT SHOWN: CLYDE BELL, CLEM MERRILL.

### A SOPHOMORE SPEAKS

This year the Sophomore Class has tried its best to overcome that disease known as "in-between-itis." We feel now that maybe we haven't shown our superiority over the Freshmen quite as much as last year's Sophomores did us, but, after all, we had too much on our minds to be bothered with such trivial matters. We have taken an active part in almost every school activity in order to overcome this well-known disease, and now we feel we can truthfully say that we belong to the high school group. The F.H.A., Tri-Hi-Y, band, 4-H, and the paper staff all are made up of some members of our class. With our class officers, Nancy Russell, Bertha Davis, Edith Willis, and Jimmy Parkin, we have sailed through with flying colors to go on as best we know how to the next step in our ladder.

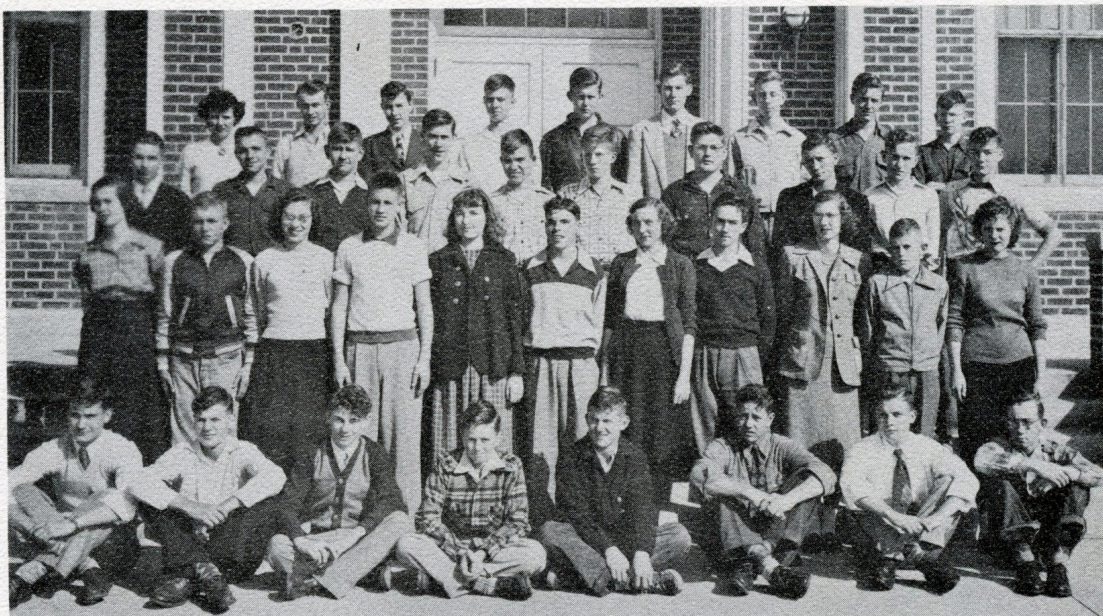
# Freshmen



Billy Eudy . . . . . Vice-President  
 Patsy Sadler . . . . . Secretary  
 Corrine Scurlock . . . . . Treasurer  
 Lewis Woodard . . . . . President



FIRST ROW: ANN OWENS, NELLIE WARD, WILMA JEAN CUMMINGS, GWENDOLYN ADAMS, JOAN GARNER, ELIZABETH MORTON, PATSY BECTON, LOLA PRATT, MOLLY HOPKINS, PEGGY DIXON.  
 SECOND ROW: JULIA KELLY, Verna Carraway, ANNIE LOUISE WILLIS, VICKIE TAYLOR, CHRISTINE DUNN, VIRGINIA HILL, CORRINE SCURLOCK, LOU ANN MASON, ELIZABETH WOODARD.  
 THIRD ROW: ANN NOE, PATSY SADLER, BARBARA GOODWIN, FAY MERRELL, JACKIE DICKINSON, BITSY BROOKS, SYLVIA MARTIN, JOYCE MERRELL, BUELAH EUBANKS, MRS. BEVERIDGE.  
 FOURTH ROW: MARGARET BRYANT, KAY LEWIS, INEZ SMITH, ERLEEN WILLIS, EMMA PERRY, JEAN TAYLOR, PHYLLIS PINER, MINNIE PAKE. NOT SHOWN: PEGGY AUSTIN, CATHERINE LEWIS, MAXINE MASON.



FIRST ROW: EDWIN BECTON, TOMMY RUSSELL, JAMES TAYLOR, WILLIAM LONGEST, DONALD TAYLOR, VERNON COURTNEY, CLIFTON COX, JACKSON EDWARDS. SECOND ROW: CAROL JONES, RONALD CHADWICK, THELMA DARLING, B. G. O'NEAL, JOAN CHIPMAN, ANDY MASON, RUTH WHITEHURST, BILLY EUDY, LOUISE PARKIN, JACKIE SIMPSON, ROSE MARIE LUPTON. THIRD ROW: JOHNNY OLUND, JIMMY MODLIN, DICKIE DICKINSON, GORDON DAVIS, FRANK GILLIKIN, LEWIS WOODARD, WALLACE CONNER, RONALD QUIDLEY, BOBBY SMITH, JIMMY GUTHRIE. FOURTH ROW: MRS. SALTER, DOUGLAS CANNON, EVERETT STYRON, GEORGE EASTMAN, OTIS LEWIS, JOHN BURROUGHS, CHARLES FARLOW, TOMMY GOODING, BILLY IPOCK. NOT SHOWN: CARL BELL, JOHN BETTS.

### A FRESHMAN SPEAKS

Long will we remember that first day in high school. No one knew what to do, and after each period we had to consult our schedules to find out where the lowly freshmen were to go next. After the first few days of trial and failure we finally caught on.

Initiation in the various clubs was not as bad as we had expected and we rather enjoyed it. Of course all those books, dust cloths, dolls, etc., we had to carry around got in our way between periods and everyone laughed when we had to clean the sidewalks with our toothbrushes.

High school has really been wonderful and we love it. We appreciate all the things the teachers and upperclassmen have done for us. We especially want to thank Mrs. Beveridge and Mrs. Salter, without whose guidance we, the freshmen of 1949-1950 would have been lost.

# Student Council

# Beta Club



SEATED: PEGGY GUTHRIE, ELIZABETH WOODARD, JIMMY PARKIN, GENE LEWIS, BILLY EUDY, ANDY MASON, BILLY DOWNUM, JOHN LYNCH, CARROLL ANN WILLIS, MARY MARTIN. STANDING: HOWARD FODRIE, LOUIS NOE, BERT BROOKS, JULIAN AUSTIN, MISS CHADWICK, GUY SMITH, IRIS DAVIS, MARY DAVIS, CATHERINE NOE, BERTHA DAVIS, ROZELLA SMITH, VERA LOU LOFTIN, SHIRLEY PAT SPRINGLE.



FIRST ROW: MARGARET FODRIE WYMAN, LETITIA SIMPSON, CONNIE DUDLEY, HELEN PAUL, OLIVE TAYLOR, ANNA LOU LAUGHTON, JEAN TAYLOR, PATSY MASON, BERNICE GRIFFIN, ELIZABETH BELL, CHRISTINE HANSEN. SECOND ROW: JEAN HOPKINS, OLA LAUGHINGHOUSE, SUE WARD, MAMIE SPRINGLE, CAROLYN GASKILL, JANE BADSEN, PEGGY PIVER, JOYCE GARNER, DOROTHY WALLACE, VERA LOU LOFTIN, PEGGY GUTHRIE, NEVA DAIL, MISS CHADWICK. THIRD ROW: MARY JOHNSON, BETTY LOU STUART, DAISY SULLIVAN, BETSY FULFORD, CARROLL ANN WILLIS, JANET DAVIS, JEAN BELL, BETSY NOE, MARY FRAZIER PAUL, JULIAN AUSTIN, LETITIA HOUSE. FOURTH ROW: BETTY JEAN TYLER, IRIS DAVIS, SHIRLEY LIPMAN, PATSY MILLER, BILLY BOWNUM, ALBERT SMALL, CEDRIC BEACHEM, TOMMY DAVIS, HOWARD FODRIC.

# Tri-Hi-Y

# Varsity Club



FIRST ROW: MARY FRAZIER PAUL, HELEN PAUL, OLIVE TAYLOR, ANNA LOU LAUGHTON, JEAN TAYLOR, ELIZABETH BELL, CHRISTINE HANSEN, ELIZABETH HOUSE. SECOND ROW: JEAN HOPKINS, NITA MOORE, IRIS DAVIS, CAROL CHADWICK, NANCY RUSSELL, MAY JO IPOCK, MARY DAVIS, BERTHA DAVIS, PEGGY GUTHRIE. THIRD ROW: NEVA DAIL, BETTY JEAN TYLER, SHIRLEY LIPMAN, BETSY FULFORD, CARROLL ANN WILLIS, JANET DAVIS, MARY SUE LYNCH, LETITIA HOUSE, BETSY NOE, MISS DUNCAN.



FIRST ROW: JULIAN PIVER, JOHN LYNCH, BILL SAMMONS, GUY SMITH, HOWARD FODRIE, OTTIS JEFFERSON, JULIAN AUSTIN, JIMMY FODRIE. SECOND ROW: IRIS DAVIS, PEGGY HAMILTON, PEGGY GUTHRIE, LETITIA SIMPSON, PEGGY O'NEAL, BETSY FULFORD, CARROLL ANN WILLIS, SHIRLEY LIPMAN, MISS JOHNSON, MR. MCQUAID.

## Bus Drivers

## 4-H Club



FIRST ROW: GEORGE WALLACE, WALLACE CONNER, L. D. SPRINGLE, ALBERT SMALL, CLIFTON COX, SECOND ROW: HARRY TAYLOR, WALLACE GARNER, VIVIAN BENTON, JOHN HAYNES, BILLY RICKS.



FIRST ROW: JAMES TAYLOR, ANDY MASON, MILDRED MASON, INEZ SMITH, DOROTHEA GILLIKIN, JANET GILLIKIN, FAYE TAYLOR, BETTY GARNER, JANICE WILLIS, PATSY WARREN. SECOND ROW: DOUGLAS CANNON, JOHNNY OLUND, KATHERINE WILLIS, ALICE HILL, LORETTA TAYLOR, EMMA PERRY, CEDRIC BEACHEM, SHIRLEY TAYLOR, CLIFTON COX, MARY MARTIN, JUNE GARNER, KAY LEWIS. THIRD ROW: TOMMY RUSSELL, OTIS LEWIS, MARK EUBANKS, VERA CARRAWAY, BETTY LOU PITTMAN, SUE WARD, JEAN TAYLOR, DESSIE PITTMAN, MARTHA PAKE, VICKIE TAYLOR, JOYCE NORRIS, NELLIE CANNON, LOIS BENTON, GWENDOLYN ADAMS. FOURTH ROW: WALLACE GARNER, BILLY RICKS, FAY MERRELL, BRAXTON BLAKE, MELVIN EUBANKS, EDWIN BECTON, MAXTON TOSTO, HARRY TAYLOR, JOHN BURROUGHS, TOMMY GOODING.

# F.H.A.

# Paper Staff



FIRST ROW: MARY OLIVE MARTIN, CYNTHIA SKARREN, MOLLY HOPKINS, ANN OWENS, MINNIE PAKE, PHYLLIS PINER, VIRGINIA HILL, PATSY BECTON, MRS. BEVERIDGE, EMMA PERRY, CATHERINE NOE, MARY LILLIE HAYNES, ANN NOE, ANNIE LOUISE WILLIS, BITSY BROOKS, SYLVIA MARTIN, LOU ANN MASON. BETWEEN: CHRISTINE DUNN, LOLA PRATT, MARGARET BRYANT, PEGGY DIXON. SECOND ROW: THELMA DARLING, EDITH LEWIS, LOUISE PARKIN, ANN NORCUM, LORNA SMITH, KATHRYN WILLIS, INEZ SMITH, JEAN DIXON, BETSY FULFORD, FAY MERRELL, BOBBY JEAN HERRING, LOIS DUDLEY, MARIE WEBB, SHIRLEY PAT SPRINGLE, CONNIE LEWIS, PATSY HARDESTY, ERLENE WILLIS, NELLIE WARD, WILMA JEAN CUMMINGS, BEULAH EUBANKS, DELMAS LEWIS, CORRINE SCURLOCK. BACK: VERNA CARRAWAY, JACKIE DICKINSON, BARBARA GOODWIN, PATSY SADLER, CHRISTINE HANSEN, MAXINE HYLER, GENEVIEVE SIMPSON, JOYCE MERRILL, NANCY RUSSELL, ELIZABETH WOODARD, EDITH WILLIS, AUDREY LAWRENCE, ELIZABETH HOUSE, GWENDOLYN ADAMS, JEAN TAYLOR, FAY TAYLOR, VICKIE TAYLOR, JOYCE NORRIS, BETTY GARNER, NELLIE CANNON, JOAN GARNER, SHIRLEY TAYLOR, KAY LEWIS, JANET GILLIKIN, LORETTA TAYLOR, IRIS DUDLEY, MARTHA PAKE, PATRICIA LEWIS, ELLEN NORCUM, SHEILA SMITH, DOROTHEA GILLIKIN, LELA FODRIE.



SITTING: CARROLL ANN WILLIS, VERA LOU LOFTIN, CONNIE LEWIS, ELIZABETH BELL, SHIRLEY LIPMAN, HELEN PAUL, JIMMY FODRIE, GARY COPELAND. STANDING: GORDON DAVIS, MAY JO IPOCK, CEDRIC BEACHEM, MARK EUBANKS, JOHN LYNCH, VIRGINIA HASSELL, JANICE MURPHY, SYLVIA MARTIN, MARGARET BRYANT, FAY TAYLOR, ANNA LOU LAUGHTON, JANICE KELLER, DONALD FULCHER, SUE GIBBS, JIMMY PARKIN, LAVINIA MASON, BOBBY DAVIS.

# Band

# Majorettes



FIRST ROW: MOLLY HOPKINS, DOROTHY PAKE, CONNIE DUDLEY, JULIAN AUSTIN, JOHN BURROUGHS, CHARLES OWENS, STEPHEN DUDLEY, STERLING CHADWICK, PEGGY GUTHRIE, ELIZABETH BELL. SECOND ROW: IRIS DAVIS, NITA MOORE, ROBERT THOMPSON, GENEVIEVE SIMPSON, CAROL JONES, VIRGINIA DAVIS, IRIS DUDLEY, BARBARA PINER, NORVY GILLIKIN, JIMMY MURPHY, JERRY WILLIS, HELEN PAUL. THIRD ROW: GHERMAN HOLLAND, EDWIN BECTON, OTTIS JEFFERSON, GEORGE EASTMAN, LARRY MOORE, JIMMY POTTER, ANDY MASON, JEAN HOPKINS, BITSY BROOKS, ANN HILL. FOURTH ROW: DONALD FULCHER, COLON MERRILL, KENNETH WILLIS, VINCENT WRIGHT, JOHN LYNCH, CATHERINE NOE, BOBBY WILLIS, MR. KING, BILLY SIMPSON.



FIRST ROW: PEGGY GUTHRIE, MOLLY HOPKINS, STERLING CHADWICK, ELIZABETH BELL. SECOND ROW: IRIS DAVIS, HELEN PAUL, NITA MOORE.

# Piano Class

# Cheerleaders

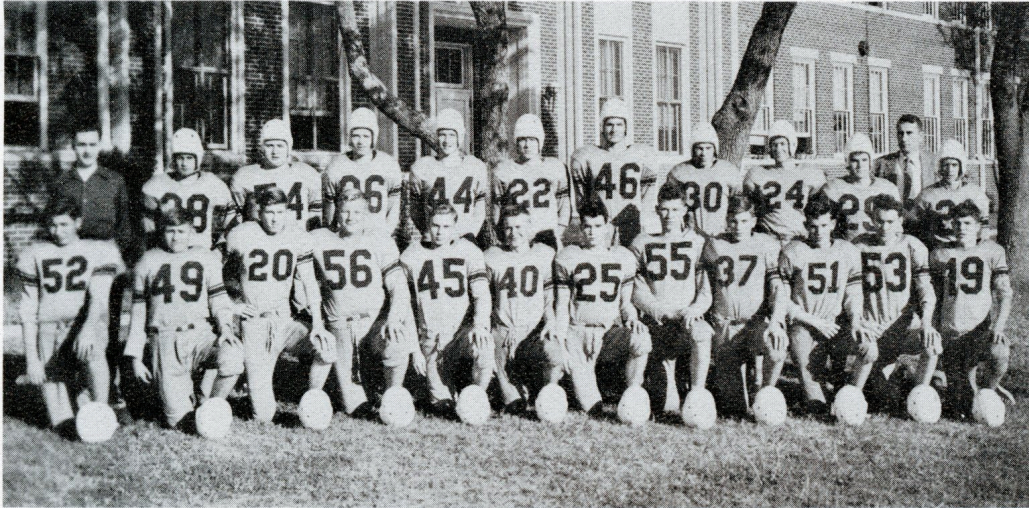


FIRST ROW: LEWIS WOODARD, GHERMAN HOLLAND, JIMMY WHEATLY, CLIFFORD LEWIS, GEORGE HUNTLEY, JR., CHARLES SPRINGLE, FRANK POTTER, T. G. LEARY. SECOND ROW: LETITIA HOUSE, JEAN HOPKINS, SADIE HARRIS, FRANCES BELL, ELIZABETH ANN LEARY, DOROTHY RANSOM, BARBARA FULCHER, SHELBA LAUGHTON, JEAN PITTMAN, PHYLLIS PAKE, PAULA JONES, JEAN JENKINS, MARTHA GIBBS, ANN HILL. THIRD ROW: LINDA SALTER, BUNNY MOORE, ELIZABETH HILL, JUDY MOORE, FRANCES BALLANCE, BARBARA DOWNUM, ANN LEWIS, MARTHA RANSOM, PEGGY WILLIAMS, RAE FRANCES HASSELL, CATHERINE POTTER. FOURTH ROW: GRACE WHITEHURST, ANITA COPELAND, BARBARA HARRIS, SUE MARGARET GIBBS, VIRGINIA DAVIS, ELIZABETH BELL, MR. VAN DEVENTER, NANCY RUSSELL, SHIRLEY LIPMAN, CHRISTINE HANSEN, JANET GILLIKIN, DOROTHEA GILLIKIN.



ANNA LOU LAUGHTON, ROBERT THOMPSON, MARY FRAZIER PAUL, JOHN SMITH, OLIVE TAYLOR.

# Football



FIRST ROW: JIM SMITH, DICKIE DICKINSON, EDGAR COLE, VINCENT WRIGHT, CHARLES OWENS, ARTHUR STAFFORD, BILLY DOWNUM, GARY COPELAND, CLYDE OWENS, IVY MASON, BERT BROOKS, JIMMY FODRIE. SECOND ROW: DELMAS LEWIS (MANAGER), B. G. O'NEAL, KENNETH WILLIS, GUY SMITH, BILL SAMMINS, HOWARD FODRIE, JULIAN PIVER, ROBERT THOMPSON, GORDON HARDESTY, JULIAN AUSTIN, MR. MCQUAID (COACH), BILLY EUDY.

This year's football team is the first to represent the school since 1942. During the war, football was discontinued due to lack of equipment and capable coaching, but now, in the year 1949-1950, the Beaufort Junior Chamber of Commerce has raised money to buy equipment for us.

Coach McQuaid took the gridiron hopefuls and started working them into shape. By the time of our first game we had a hard-working team which defeated Richlands 19 to 0. Our second and last game was played with Swansboro. We succumbed to a last half defeat with a final score of 14 to 12. We started too late to arrange more games, but next year the Sea Dogs will have a full eight game schedule

FOX-DOWNUM CO.

Ready to Wear and Dry Goods

Beaufort, North Carolina

# Boys' Basketball



FIRST ROW: BILL SAMMONS, HOWARD FODRIE, JIMMY FODRIE, OTIS JEFFERSON, GUY SMITH. SECOND ROW: DELMAS LEWIS (MANAGER), CLYDE OWENS, GORDON HARDESTY, JULIAN AUSTIN, MR. MCQUAID (COACH), CHARLES OWENS, BILLY RUDY, JOHN LYNCH.

We are very proud of our boys' basketball team this year. They have added two championship trophies to our collection. This first was won in the county tournament, in which we defeated Newport and Harkers Island. The boys were then invited to play in the Alliance Tournament, and came out winners there also.

Here are listed the teams played and the scores.

Beaufort	27	Harkers Island	20	Beaufort	34	Smyrna	20
Beaufrot	21	Newport	32	Beaufort	26	Harkers Island	17
Beaufort	59	Atlantic	21	Beaufort	40	Atlantic	20
Beaufort	29	Hobucken	18	Beaufort	20	Vanceboro	26
Beaufort	16	Morehead City	30	Beaufort	24	Dover	41
Beaufort	40	Richlands	36	Beaufort	37	Smyrna	14
Beaufort	44	Hobucken	29	Beaufort	35	Richlands	27
Beaufort	29	Newport	36	Beaufort	32	Dover	19
Beaufort	54	Swansboro	17	Beaufort	55	Swansboro	16
Beaufort	25	Morehead City	20				
Total Beaufort			647	Opponents		459	
Games Beaufort			14	Opponents		5	

# Senior Boys      Girls' First String



FIRST ROW: CHARLES OWENS, JIMMY FODRIE, JULIAN AUSTIN.  
SECOND ROW: OTTIS JEFFERSON, BILL SAMMONS, HOWARD FODRIE,  
GUY SMITH.



FIRST ROW: IRIS DAVIS, CARROLL ANN WILLIS, MARY SUE LYNCH.  
SECOND ROW: LETITIA SIMPSON, PEGGY O'NEAL, PEGGY GUTHRIE.

# Girls' Basketball



FIRST ROW: IRIS DAVIS, F; LETITIA SIMPSON, G; PEGGY GUTHRIE, F; MARY SUE LYNCH, G; CAROLYN GASKILL, F; ELIZABETH HOUSE, G. SECOND ROW: BETSY FULFORD, F; CARROLL ANN WILLIS, F; JANICE WILLIS, F; ALICE DUDLEY, G; NANCY RUSSELL, F; PEGGY O'NEAL, G. STANDING: MISS JOHNSON (COACH), PEGGY HAMILTON (MANAGER).

The girls' basketball team made a wonderful record this year--winning eighteen out of nineteen games. They were defeated in the New Bern Tournament, but won first place in the county tournament. This is the first time in this county that both the boys' and girls' team of one school have been champions.

Here are listed the teams played and the scores.

Beaufort	38	Harkers Island	22	Beaufort	44	Morehead City	18
Beaufort	37	Newport	21	Beaufort	57	Harkers Island	33
Beaufort	27	Atlantic	22	Beaufort	34	Atlantic	13
Beaufort	32	Hobucken	31	Beaufort	44	Vanceboro	27
Beaufort	35	Morehead City	12	Beaufort	36	Dover	28
Beaufort	29	Richlands	21	Beaufort	34	Smyrna	24
Beaufort	22	Hobucken	26	Beaufort	40	Richlands	39
Beaufort	60	Newport	39	Beaufort	43	Dover	19
Beaufort	38	Swansboro	20	Beaufort	36	Swansboro	27
Beaufort	30	Smyrna	28				

Total Beaufort	716	Opponents	470
Games Beaufort	18	Opponents	1

# Junior Varsity



GUS FARLOW, PIERSON WILLIS, JIMMY PARKIN, B. G. O'NEAL, GARY COPELAND.



FRONT: EDWARD POWELL. FIRST ROW: GUS FARLOW, PIERSON WILLIS, JIMMY PARKIN, B. G. O'NEAL, GARY COPELAND. SECOND ROW: JIMMY GUTHRIE, JIMMY MODLIN, DICKIE DICKINSON, EDWIN BECTON, JOHNNY OLUND, MR. SKARREN (COACH), RONALD QUIDLEY (MANAGER).



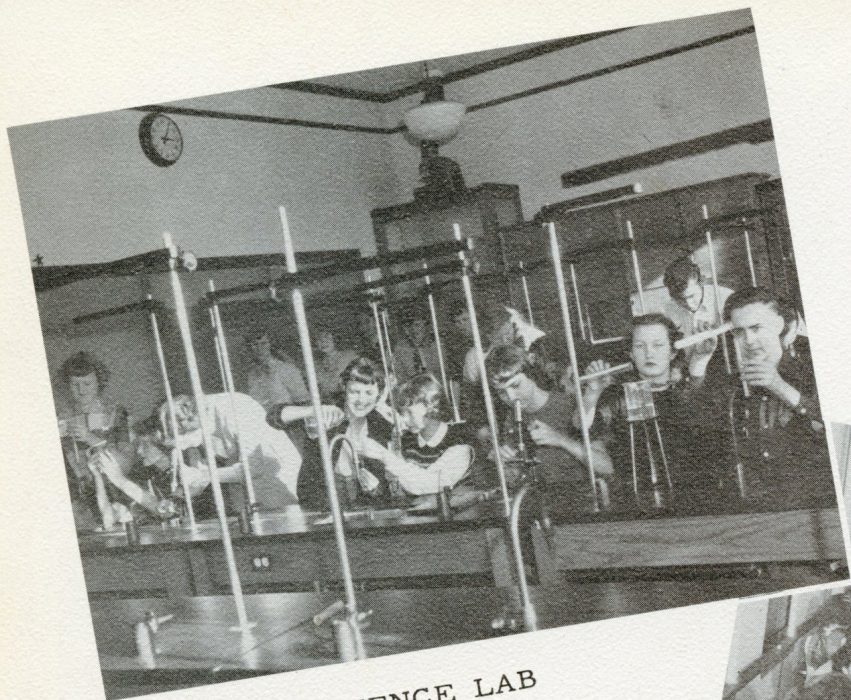
1. That's what I like about the South!!! 2. Young love at B.H.S. 3. Big Chief Thunder. 4. Dreamers' Holiday. 5. Hail, Hail, The Gang's All Here! 6. Smile for the birdie! 7. Sad Sack. 8. You name it!!! 9. Step right up, folks! 10. Their younger days! 11. Watchdogs. 12. Sittin' Pretty! 13. Oh-h-h-h!!! 14. Improving the scenery!

REMEMBER THIS

In Beaufort  
Your Trusted Jeweler

JARVIS HERRING

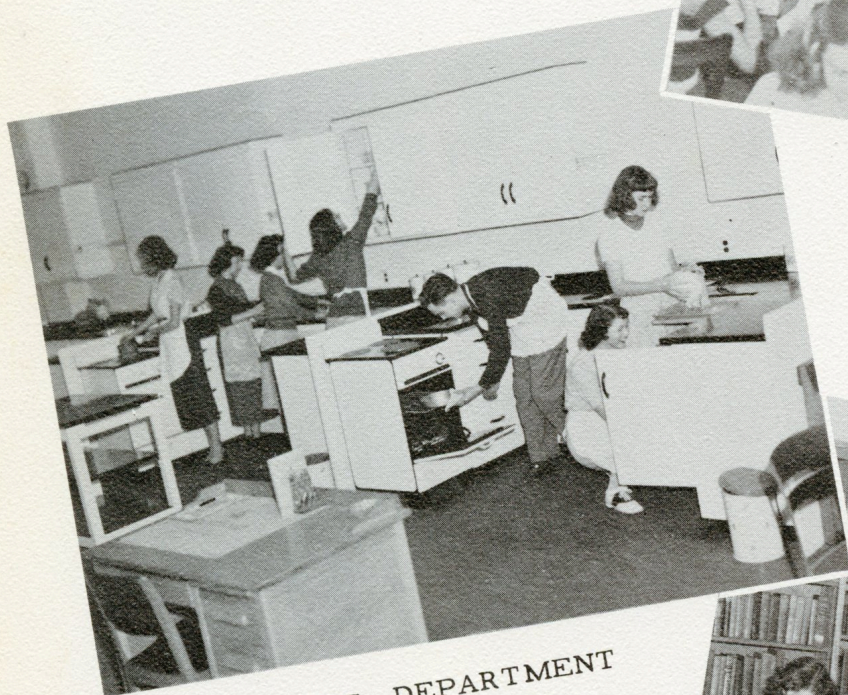
A GENUINE REGISTERED  
**Keepsake**  
DIAMOND RING



SCIENCE LAB



CAFETERIA



HOME EC. DEPARTMENT



LIBRARY

# COMMERCIAL DEPARTMENT



Miss Goodwin  
INSTRUCTOR

# SAFETY PATROL

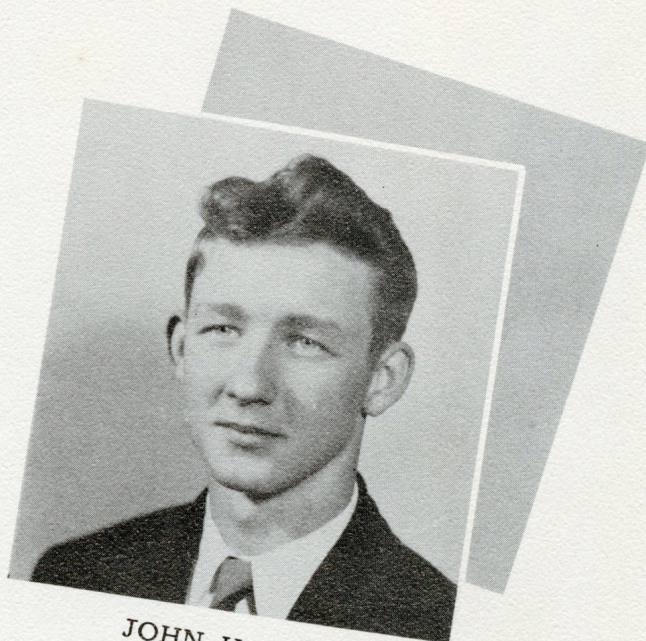
FIRST ROW: BRUCE EDWARDS, HERBERT MASON. SECOND ROW: BERNARD HALL, GHERMAN HOLLAND, BOBBY DAVIS, HUGH MASON, GERRY THOMAS. BACK: GEORGE LEWIS.



# Annual Staff



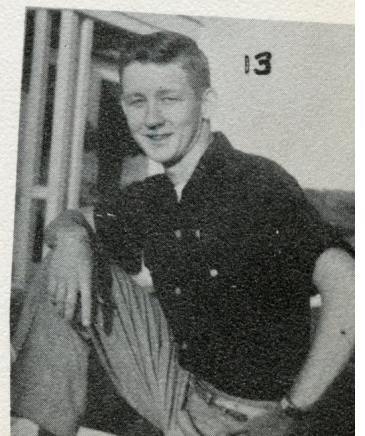
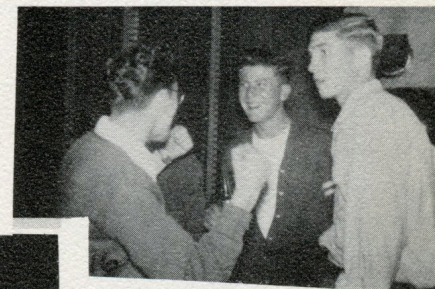
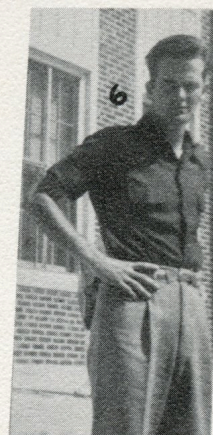
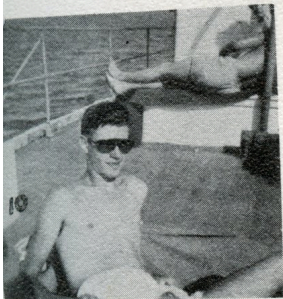
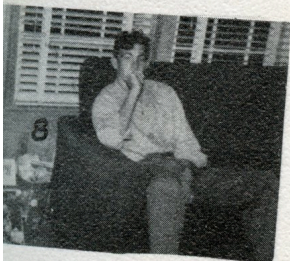
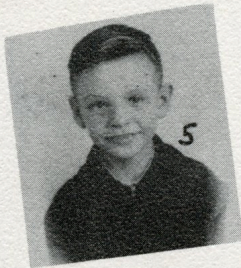
DAISY SULLIVAN  
Editor



JOHN HAYNES  
Business Manager

SEATED: BETSY NOE, MARY FRAZIER PAUL, HOWARD FODRIE, OLIVE TAYLOR, NEVA DAIL, HELEN PAUL, MARGARET FODRIE WYMAN, JEAN HOPKINS. STANDING: DELMAS LEWIS, JOHN HAYNES, MELVIN EUBANKS, MISS DUNCAN (ADVISOR).





1. Time out from classes. 2. Bachelors' Club! 3. Your Indian's showing! 4. It's in the bag!! 5. Ain't he cute?? 6. Juncy, our favorite!! 7. Off to school 8. Taking it easy!! 9. Chain gang. 10. Hollywood minded!! 11. Engagement ring???? 12. Won't they ever stop trying? 13. Glamour Boy!! 14. Wha' happened? 15. Man-haters!?? 16. Reliving the game! 17. Cleaning up! 18. Million dollar legs!! 19. Mary Davis; just a kid 20. Day dreaming!! 21. Little Lulu. 22. Talking things over!

Compliments of  
**TOPSAIL SERVICE STATION**

Texaco Products  
Marine Dock-Corner Front & Orange St.  
Beaufort, N. C. Phone 509-1

Compliments  
of

**HUNTLEY'S**

Hardware & Building Supplies  
Phone 487-1 Beaufort, N. C.

For Over a Quarter of a Century

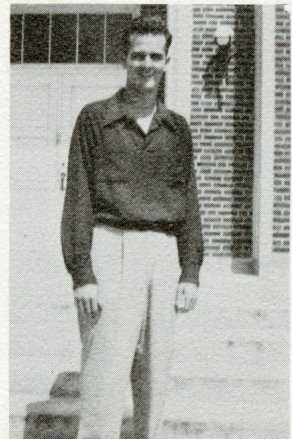
**WHITES**

Fine Dairy Products  
Milk Ice Cream  
Have Been the Choice of the Majority



You  
Can see what's cooking  
at

**THE GRIDDLE**



Get All Your  
Drug Store Needs

At



Compliments  
of

LOFTIN MOTOR CO.

Sales



Service

Beaufort, N. C.

DAVIS BROTHERS

Dry Goods, Notions, and Shoes

"Everything for the family"

Front St. Beaufort, N. C.

Compliments  
of

RAMSEY GROCERY CO.

Beaufort, N. C.

Best Wishes

POTTER'S PURE FOOD STORE

Fruits, Vegetables, and Frozen Foods

Phone 444-1 Beaufort, N. C.

Compliments  
of

BRADY'S CONFECTIONERY STORE

Quality Candy, Drinks, and Ice Cream  
Across from the School

Beaufort, N. C.

Good Luck, Grads

C. G. GASKILL CO.

Feed, Seed, Fertilizer

Beaufort, N. C.

Compliments  
of

HOOPER'S ESSO STATION

"Those fine ESSO Products"

Beaufort, N. C.

Compliments  
of  
MARY JOYCE BIGGS  
Class of '48

Compliments  
of  
JEFF'S BARBER SHOP  
Front St. Beaufort, N. C.

Compliments  
of  
ANN ST. ESSO SERVICE STATION  
  
Hobert Kelly  
Owner & Proprietor  
"Service in our Business"  
Beaufort, N. C.

IDEAL  
  
Is and Ideal Place for all  
  
Dry Cleaning  
520 Front St. Beaufort, N. C.

Compliments  
of  
THE VOGUE  
  
"We sell anything Milady wears"  
  
Beaufort, N. C.

Good Luck on the Long  
  
Road Ahead  
  
TIRE SERVICE CO.  
  
J. R. Merrill

Compliments  
of  
WRIGHT'S SERVICE STATION  
  
by  
L. B. McIntosh  
  
Beaufort, N. C.

PAUL MOTOR CO.  
  
Home of Dodge, Plymouth  
and Dodge (job rated) Trucks  
for Carteret County  
  
Beaufort, N. C.

Compliments

of

## CITY GROCERY

"Quality Merchandise Always "

Phone 4741

Beaufort, N. C.



PARKERS MOTORS

509 Arendall St.

"We aim to take care of our own"

Telephone M-939-6

Morehead City, N. C.

MERRILL'S

Ladies Ready to Wear

Dry Goods & Notions

"Meet your friends at Merrill's"

GULF SERVICE STATION

Marine and Auto Service

J. W. Willis W. E. Lewis

Front & Turner St. Phone 3276

Compliments

of

HOLDEN'S RESTAURANT

"Carteret's Foremost Restaurant"

Beaufort, N. C.

Good Luck Grads

## JOE HOUSE DRUG STORE

Phone 333-1

Your  
Rexall  
Store

Front St.  
Beaufort

Prompt and Reliable Prescription Service

Congratulations

Class of '50

## ROSE'S 5, 10, 25c STORE

"Your Friendly Store"

Beaufort, N. C.

W. Roy Willis

GROCERY & USED CAR LOT

On Highway 70  
at the City Limits  
Opposite Beaufort High School

Day Phone 331-1    Nite Phone 301-6

BARBOUR'S MARINE SUPPLY CO.

Machinists, Blacksmiths  
General Repairing  
Electric & Acetylene Welding  
Universal & Johnson Motors  
Wisconsin Air Cooled Motors  
J.O. Barbour, Mgr.    Beaufort, N.C.

Luck to you, Graduates

GEORGE LAUGHTONS GARAGE

General Repairs on all  
Makes of Cars & Trucks

Phone 516-6    Beaufort, N. C.

Compliments

of

FELTON'S

Shoes and Men's Apparel

Beaufort, N. C.

Let

### F. R. BELL

be

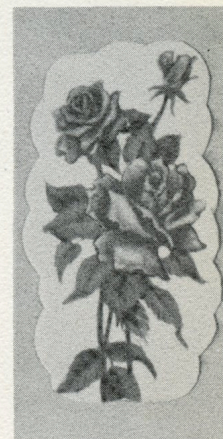
Your Druggist

Phone 323-1

Beaufort, N. C.

Goodbye Seniors  
We will miss you  
  
THE BETA CLUB OF  
BEAUFORT HIGH SCHOOL

BEAUFORT FLORIST  
Flowers for all Occasions  
  
Telephone 337  
  
Beaufort, N. C.  
  
Mrs. Ettie M. Jones



Compliments  
of  
  
ANN STREET GROCERY  
  
Bruce Edwards-Proprietor  
  
Phone B-844-1    Beaufort, N. C.

Compliments  
of  
  
LIPMAN'S  
  
"Clothes for the whole family"  
  
Beaufort, N. C.

MAOLA MILK  
& ICE CREAM CO., INC.  
  
"Taste the difference"  
Milk, Ice Cream, Butter, and Cheese  
  
Phone New Bern 4184  
or  
Phone Morehead 7966

SOUND CHEVROLET CO., INC.  
  
Oldsmobile - Chevrolet - Pontiac  
  
Sales and Service  
  
Phone M-562-1    Morehead City, N. C.

Compliments  
of  
  
HILL's  
  
"Known for good clothes"  
  
New Bern-Greenville-Morehead

The New  
  
SANITARY FISH MARKET  
& RESTAURANT  
  
Thirty yards east of Former  
Location  
Open Year Round  
11:30 a.m. to 8:30 p.m.  
Morehead City, N. C.

Compliments  
of  
MACHINE & SUPPLY CO.  
W. J. Ipock  
Beaufort, N. C.

Compliments  
of  
CITY APPLIANCE & FURNITURE CO.  
Front St. Beaufort, N. C.

G. W. DUNCAN  
General Insurance, Real Estate  
and Long Term Home Financing  
Phone 521-6 Beaufort, N. C.

B. A. BELL  
Your Jeweler Since 1910  
Diamonds-Watches-Jewelry  
Silverware-China-Crystal  
Beaufort Phone 445-1

Compliments  
of  
R. H. HILL & CO.  
Beaufort, N. C.

Compliments  
of  
SUNSHINE LAUNDRY  
"The soft-water laundry"  
Dry Cleaning  
Phone 9266 17th & Bridges St.  
Morehead City, N. C.

Compliments  
of  
WAINWRIGHT'S  
ESSO SERVICE STATION  
"Where you get that good ESSO  
service with a smile"  
Stanley Wainwright Herbert Kelly  
Owner Manager

Best of Luck Grads  
JOHNSON-SAUNDERS  
DRY CLEANING CO.  
Dial-B-447-1 Beaufort, N. C.

